

betterworld

Day of Giving

Frequently Asked Questions

Q: Can we have multiple campaigns for the Day of Giving?

Q: Is it really free?



Q: How do we receive our funds?



Q: Is it really free?

A: Yes! BetterWorld is sustained by optional donor contributions. Donors are also asked if they'd help cover the credit card processing fees. Most donors cover this on your behalf, but in case they do opt out, that would be the only potential deduction (you do have the ability to require this, and in that case, you'd keep every penny you raise on the platform!).

Q: How do I create my Day of Giving campaign?

A: We can do that for you! Just fill out this form [insert dog registration link], and we'll get your account created and your Day of Giving campaign started. Once we're finished, we'll send you an invite to access your account.

Q: Can you process offline funds? We have a lot of donors that pay via check, etc.

A: Yes! You can easily enter any of those "offline" transactions so everything is recorded in one place. You can even send them a receipt through the system as well!

Q: Do we have access to our portal/page ahead of time, and can funds be processed ahead of time?

A: Yes, you can begin customizing your campaign at any time, but only the funds processed on the Day of Giving will count towards your Day of Giving total raised. You can also use any of our tools, which are free to use all year round.

Q: Can we have multiple campaigns for the Day of Giving?

A: Yes! You can use any of our tools to help you fundraise for the Day of Giving. As long as the donations are processed on January 29th, they will count towards your Day of Giving total.

Q: What if I don't want to wait until the Day of Giving and start now?

A: Great! You can start using our free tools now, including our website donation forms. These are a great way to start seeing immediate fundraising impact for your school. Jessica Nieves, your NCEA Growth Partner, can walk you through all the tools and help you start fundraising today!

Q: I don't have any staff to help me manage this. What type of time commitment will this require?

A: No worries, we've got you covered! BetterWorld is focused on being easy, simple, and quick to set up and use. Jessica Nieves is your dedicated Growth Partner, and she is there to support you throughout your entire fundraising journey beyond just the Day of Giving.

This white glove service is just one of the perks of your NCEA Membership. She even sets up your account and gets your Day of Giving campaign started for you!

Q: Can I use this campaign next year, or do I need to start from scratch?

A: No need to start all over! We can copy any copy campaign, including your Day of Giving, so you don't have to recreate the wheel!

Q: How do I make sure that when the Diocese looks to see the school is involved, ours is listed and clickable?

A: To be searchable on the NCEA Day of Giving page, you must process the funds through BetterWorld.

Q: How do we receive our funds?

A: You can withdraw your funds directly from your account dashboard, and they will be directly deposited into whichever bank account you connected to the platform. Funds are available to withdraw after 6 days.

Q: Do you offer more than just the Day of Giving campaign tool?

A: Yes! BetterWorld has a variety of tools designed to support your school all year round. We can support silent & live auctions, ticketing, peer-to-peer, crowdfunding, impact giving, paddle raises, raffles & giveaways, and year-round donation forms.

100% FREE, EASY-TO-USE TOOLS WITH ZERO FEES

Start Your Day of Giving Campaign

At BetterWorld, we provide Catholic schools with easy fundraising tools, dedicated support, and strong partnerships for a successful year.

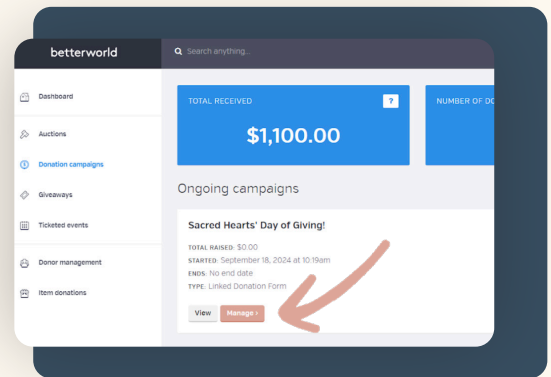
Welcome to a better way to fundraise.



Step 01. Go to dashboard

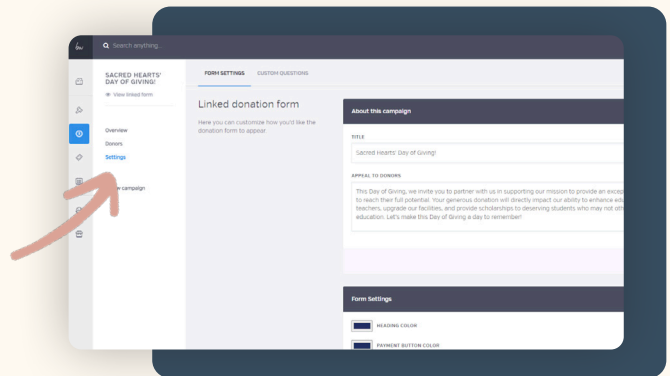
Head to your day of giving campaign in your dashboard.

Click on donation campaigns on left hand side menu > click the orange “manage” button on the Day of Giving campaign.



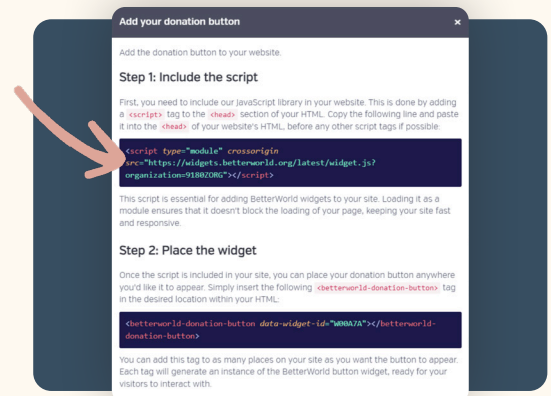
Step 02. Customize your campaign

Click on “settings” to customize all the aspects of your DOG Campaign.



Step 03. Add to your own website

Use our quick and easy instructions to add your campaign to your website!



How to add team members to my organization

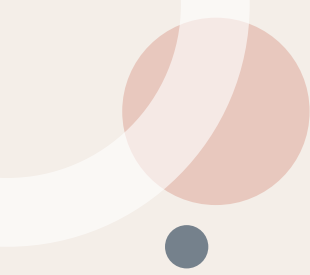
Add and manage your teams members permissions easily in your team settings.


It's easy to invite team members to collaborate with you, and we don't place any team size restrictions on your account. Simply go to your [team management](#) page and click the "Invite" button to send invitations to your team members.

To limit which actions a team member can perform, you can assign [roles](#) to each team member. We've provided a couple of default roles, but you can create custom ones as well. You can edit the permissions granted by each role (and create new roles) on the role management page.

Our default roles are Account Administrator and Team Member. Both are able to fully manage campaigns and profile settings, but only Account Administrators can access account/payout/billing information and modify team members and roles.


Contact us today to [get a demo](#) or simply [sign up](#) and start raising!




Visit our **Help Center**  for helpful videos, articles, and guides for any and all additional questions.

 Online Auctions


 Live Auctions

 Paddle Raise


 Ticketing

 Peer-to-Peer

 Crowdfunding

 Impact Giving

 Giveaways & Raffles

 Standard Donations

 Mobile Giving

 Donor Management

 A-thons

NEW!

 Donation Forms

NEW!

betterworld

Contact us today to **get a demo** or simply **sign up** and start raising!

betterworld.org